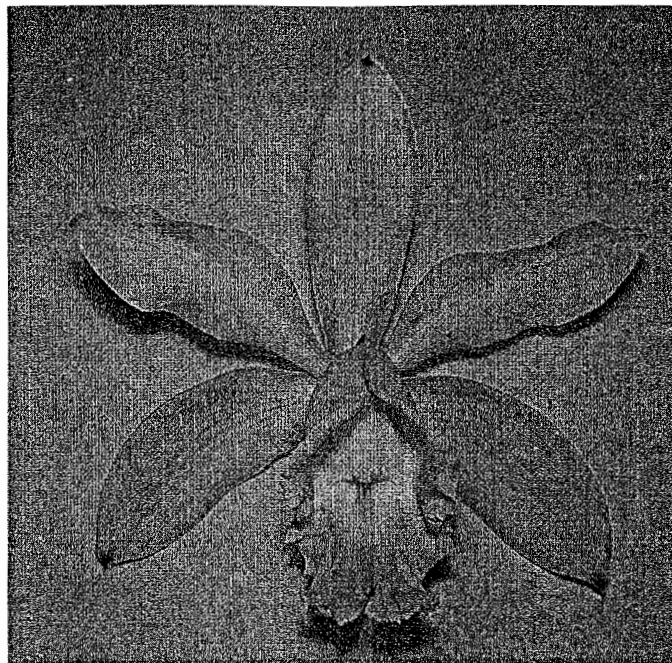


Species of the Month

February 2005



Cattleya harrisoniana

Easy Bifoliate Species

Easy growing Brazilian native *Cattleya harrisoniana* has been considered a variety of *Cattleya loddigesi* because the two plants have overlapping distribution areas. Plants of this species can grow to 20 inches tall and bear 2 to 3 inch rose colored flowers that are yellow and violet at the tip. The floriferous plants are easy to bloom. They usually bloom late in the summer, but they can bloom at other times of the year as well. The slender pseudobulbs are about 12 inches tall with two narrow 5 inch leaves and bloom from green sheaths as the growths mature. The plants grow on bushes in swampy areas near Rio de Janeiro in warm, humid conditions.

LIGHT

Bright; 2500 – 3000 Footcandles. Bright light intensifies flower color.

TEMPERATURE

Warm to Intermediate; 55°F min. to 85°F max.

WATER

Water heavy from late spring through autumn during the active growing season. Less water in winter. The roots need to dry rapidly after watering.

HUMIDITY

70% - 80% is preferred.

POTTING

Use a coarse open fast draining medium that allows the roots to dry rapidly after waterings. Repot only as new roots appear!!!!

FERTILIZER

Fertilizer should be provided on a regular basis during the active growing period, 1/2 to 1/4 strength.