



• **GREATER LAS VEGAS ORCHID SOCIETY**
THE ORCHID COLUMN

CAROL SIEGEL, EDITOR



SUNDAY MAY 1, 2011
2 P.M.

77

SPECIAL EVENTS:

April 3, 2011

NEW MEETING PLACE
EASTER SEALS BUILDING

May 1, 2011

Karen Muir

"What Makes a Good Paph"

June 5, 2011

East Side Greenhouse Tour

Ole Borresen

Cathy and Jim Loftfield

Roberta and Fred Schechter

July 10, 2011

Fred Clarke,

"Growing Fabulous Cattleya"

August 7, 2011

Barbecue Mt. Charleston

September 11, 2011

Cathy Loftfield

"A Passion for Orchids"

October 2, 2011

Peter Lin

"The Three A's-

Angraecum, Aeranthes, and

Aerangis"

November 6, 2011

Carol Siegel

"The Sex Life of Orchids"

December 4, 2011

Holiday Party

KAREN MUIR PRESENTS "WHAT MAKES A GOOD PAPHIOPEDILUM?" AT OUR MAY MEETING

This month we are pleased to have Karen Muir, a much-loved lady, return to our club to present a power point talk on "What Makes a Good Paph." We will also have two dozen blooming paphs from Hilo Orchid Farm in the raffle (along with all the other beautiful hotel plants...)

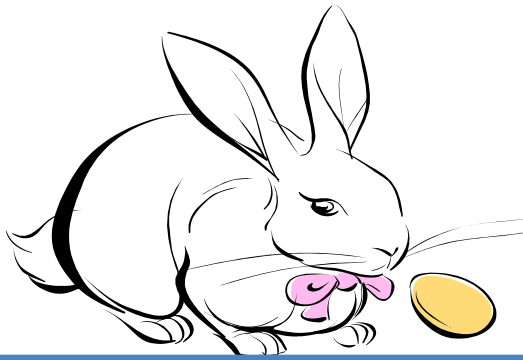
Karen is originally from Michigan where she began raising orchids around 1975. She was a member of the Michigan Orchid Society and held all of the offices of the Society including show chair, program chair, vice president and president. Karen became an accredited American Orchid Society Judge in 1997. In 1998, she was transferred by her Company, Lincoln Mercury, to Irvine, California and retired in January 2002. Karen also served 5 years as the American Orchid Society Chair of the Pacific South Judging Region and has traveled to Canada, Guatemala, Peru, Ecuador, Brazil, South Africa, England and Japan to attend and judge orchid shows. She has lectured on the Society circuit in the US, including the California Paphiopedilum Guild, the Slipper Alliance, NCOS (National Capital Orchid Society) Paphiopedilum Forum, two South African Paphiopedilum Conferences and the Paph Forum in London, England. Karen is now the Affiliated Societies Representative and Treasurer for the Orchid Digest. .

DON'T FORGET TO BRING SHOW AND TELL PLANTS. THIS MONTH, WE WILL HAVE YOUTALK ABOUT YOUR SPECIAL PLANT FOR A MINUTE OR TWO. JUST TELL US WHAT IS SPECIAL TO YOU ABOUT IT.

RON PARSONS SHOWED US THE BEAUTIFUL ORCHIDS OF CRETE

Well, anyway he TRIED to show us the beautiful orchids of Crete. Our new meeting room was too light (we later learned to our chagrin) to present anything but a power point presentation. Diana and I went over to the center last week, and we were reassured that a power point presentation is very bright in the meeting hall at Easter Seals. Therefore, from now on (we promise), we will only have speakers who do digital talks. Ron barreled on anyway, and he is such a delightful man that all was not lost. He promises to return next year without slides and have a new digital presentation. Ron's photography and encyclopedic knowledge of orchids is known both nationally & internationally. He has been photographing orchids, wildflowers, and almost every other kind of plant for over 25 years, and has a slide collection that numbers well over 80,000 slides! He went "digital" just over a year ago, and in this short time has taken thousands of photos orchids, wildflowers and other rare plants. See the [orchid photogallery](#) for some of his new digital photographs.

Crete, the largest of the Greek islands, is situated in the eastern Mediterranean Sea. The island is like a giant rock garden, with many beautiful plants (and far too many goats!) growing in its stony soils. Many of these are endemic to the island. Where the orchids are found, they can be very numerous in both species and quantity. There are more than 60 species of orchids here, many of them very variable, several with regional subspecies. There are lots of natural hybrids also, making identification difficult. This talk featured the orchids (as well as some of the other beautiful wildflowers) seen on a trip there in the middle of April, 2007.



**WHAT'S DOING IN OUR
LITTLE CORNER OF THE
ORCHID WORLD....**

Well, we finally went and did it. We moved to our new location, the Easter Seals Building, 6200 West Oakey, between Torrey Pines and Jones (closer to Jones). The weather was glorious, and we really enjoyed eating outside under the trees. The kitchen is big and lovely, and the meeting hall warm and spacious. There is less setting up, and it is easier to clean. We thank Steve Ninemire for all his help with the move and the meeting. What a guy!! He even picked up our library cabinet for us. We welcomed several guests to our meeting including Lauren Siegel (my granddaughter), Mary Gabriel, Melanie Long, Leah Prince and Alfred Estrella. We hope to see you again. We were pleased that despite a fall, Nita Bragg was not badly hurt, and she went home that same afternoon. Thanks to all the compassionate folks who helped out including Tony Billitere, Bruce La Follette, Joel Davidson, Jeanne Tinsman and John and Judie Tuthill. We really do have the nicest members. Now, when we eat outdoors, let us all help each other get situated and help any members having trouble juggling food and drinks. My heart won't take any more excitement like that! TONY BILLITERE, our raffle angel, commandeered probably hundreds of plants from the hotels that filled our room to overflowing. He is such a wonderful supporter of our club. Thanks to Joel Davidson, Gail Harris and Tony for caring for the plants. We thank Eileen McKyton for getting us lovely blooming orchids from Carmela's Orchids (www.carmelaorchid.net)

The Easter Show at the Cal was a big success, and our display with a spring garden theme was just gorgeous. Shelly North outdid herself and put together a display of grace and beauty. We are so grateful to this lovely lady for her generous support of our club & are certainly lucky to have this professional artist and designer on our team. The Towne Club (Nita Bragg and I belong...) made a field trip to see our beautiful display as well as the lovely cymbidium of our sister society.. We thank The Torrance Cymbidium Society and their president-for-life Everett Stockstill for inviting us once again to share in the festivities. Our display committee helping Shelly included Barry and Mary King, Diana Smith, Eileen McKyton, Ole Borresen and Cathy Loftfield. We also had excellent ambassadors talking about our club and answering questions- William Whaley, Cathy Loftfield, Steve Hochman, Wanda and Bruce La Follette, Judie and John Tuthill, Barry and Mary King and Ole Borresen. We had a really good time!



On **Saturday, April 30th**, our club will meet at **9 am** in the Red Springs Picnic area of Calico Basin to see our native orchid, ***Epipactis gigantea* in bloom**. **Paula Garrett**, our Nevada native orchid guru, has agreed to take us on a field trip to see this beautiful orchid. Take Charleston west, turn right at Calico Basin (the turnoff before Red Rock) and go straight. The Red Springs picnic area is on the right. Park. It was great fun last year, with hundreds of orchids, an easy walk, and lots of other wildflowers, too. Come join us. Bring a hat, water, sunglasses or sunscreen, and good walking shoes—AND A CAMERA.

***Epipactis gigantea* is sometimes called the “stream orchid” because it loves to grow in wet places along bogs, hot springs, road cuts and wet cliff faces. It is the most common native orchid in California and occurs all over Las Vegas where there is a little water- First Creek, La Madre Spring, Ash Spring, Pine Creek, Icebox Canyon, Spring Mountain Ranch, Sandstone Spring, and Blue Diamond. The plant grows to about three feet high with 12-20 flowers per inflorescence, each 1 ½ to two inches across. The sepals are dark green, and the lip is usually red, three-lobed in the middle, with yellow lateral lobes. Part of the lip is elongated and quivers in the breeze, hence the other popular name, the “chatterbox orchid” for its moving lips! The plant has ten or more green alternative leaves which die back to the**

SAVE THESE DIRECTIONS FOR JUNE MEETING, PLEASE TWO PAGES!

DIRECTIONS FOR EASTSIDE GREENHOUSE TOUR ON JUNE 5TH

KINDLY PREPARED BY CATHY LOFTFIELD

WE START AT THE EASTER SEAL BUILDING FOR SIMPLICITY SAKE. YOU CAN MODIFY FOR YOU.

From: 6200 W Oakey Blvd # L, Las Vegas, NV 89146-1103 EASTER SEAL BUILDING

To: 1532 Beech Grove Dr, Las Vegas, NV 89119-0367 US (HOME OF CATHY LOFTFIELD)

1. Start out going EAST on W OAKLEY BLVD toward S JONES BLVD/NV-596 S. (go 0.1 miles)
 2. Turn RIGHT onto S JONES BLVD/NV-596 S. (go 0.5 miles)
 3. Turn LEFT onto NV-589 E/W SAHARA AVE. (go 2.9 miles)
 4. Turn RIGHT onto S RANCHO DR. (go 0.0 miles)
 5. Merge onto I-15 S toward LOS ANGELES. (go 1.1 miles)
 6. Take I-15 EXPRESS LN. (go 2.8 miles)
 7. I-15 EXPRESS LN becomes I-15 S. (go 1.2 miles)
 8. Take EXIT 34 toward AIRPORT/I-215 E/CR-215 W/HENDERSON/215 WEST. (go 0.2 miles)
 9. Merge onto I-215 E/BRUCE WOODBURY BELT via the exit on the LEFT toward MCCARRAN AIRPORT/HENDERSON. (go 2.6 miles)
 10. Take the WARM SPRINGS RD exit, EXIT 9. (go 0.3 miles)
 11. Turn LEFT onto E WARM SPRINGS RD. (go 0.7 miles)
 12. Turn LEFT onto TAMARUS ST. (go 0.4 miles)
 13. Turn RIGHT onto MISSION HEIGHTS LN. (go 0.0 miles)
 14. Turn RIGHT onto JASMINE CREEK WAY. (go 0.1 miles)
 15. Turn LEFT onto BEECH GROVE DR. (go 0.0 miles)
 16. 1532 BEECH GROVE DR is on the LEFT. (go 0.0 miles) CATHY'S HOUSE
- >> TOTAL ESTIMATED TIME: 19 minutes | DISTANCE: 13.00 miles

From: 1532 Beech Grove Dr, Las Vegas, NV 89119-0367 LOFTFIELD HOUSE

To: 6855 Stone Dr, Las Vegas, NV 89110-4126 US SCHECHTER HOUSE

1. Start out going EAST on BEECH GROVE DR toward SAXONY DR. (go 0.0 miles)
 2. BEECH GROVE DR becomes SAXONY DR. (go 0.1 miles)
 3. Turn RIGHT onto BRIGHT VIEW DR. (go 0.1 miles)
 4. Turn RIGHT onto CYPRESS GARDENS LN. (go 0.3 miles)
 5. Turn LEFT onto E WARM SPRINGS RD. (go 0.7 miles)
 6. Turn LEFT onto S EASTERN AVE. (go 3.0 miles)
 7. Turn RIGHT onto E TROPICANA AVE/NV-593 E. (go 2.1 miles)
 8. Merge onto I-515 N/US-93 N/US-95 N via the ramp on the LEFT. (go 3.8 miles)
 9. Take the CHARLESTON BLVD exit, EXIT 72. (go 0.4 miles)
 10. Turn SLIGHT RIGHT onto E CHARLESTON BLVD/NV-159 E. Continue to follow E CHARLESTON BLVD. (go 3.6 miles)
 11. Turn LEFT onto N HOLLYWOOD BLVD. (go 0.8 miles)
 12. Turn RIGHT onto STONE DR. (go 0.2 miles)
 13. 6855 STONE DR is on the RIGHT. (go 0.0 miles)
- TOTAL ESTIMATED TIME 24 MINUTES 15 MILES

From: 6855 Stone Dr, Las Vegas, NV 89110-4126 US SCHECTER HOUSE

To: 1248 S 8th St, Las Vegas, NV 89104-1547 OLE BORRESEN HOUSE

1. Start out going WEST on STONE DR toward ROSSMORE DR. (go 0.2 miles)
2. Turn LEFT onto N HOLLYWOOD BLVD. (go 0.8 miles)
3. Turn RIGHT onto E CHARLESTON BLVD. (go 6.6 miles)
4. Turn LEFT onto S 8TH ST. (go 0.1 miles)
5. S 8TH ST becomes PARK PASEO. (go 0.0 miles)
6. Turn LEFT onto S 8TH ST. (go 0.1 miles)
7. 1248 S 8TH ST is on the RIGHT. (go 0.0 miles)

B) 1248 S 8th St, Las Vegas, NV 89104-1547 US

>> TOTAL ESTIMATED TIME: 15 minutes | DISTANCE: 7.79 miles

KEEP READING—THERE IS MORE NEWSLETTER BELOW..



OUR JUNE 5TH GREENHOUSE EASTSIDE GREENHOUSE TOUR...



We have been invited to tour the greenhouses of those of our friends who live on the East side of town June 5th at 2. We will start with start with the sunroom of Cathy and Jim Loftfield, proceed to the growing area under skylights of Roberta and Fred Schechter and finish up in the greenhouse of Ole Borresen, a great chef who will feed us! It is far for some of us so try to arrange carpooling. Two people have volunteered to carpool so far: Diana Smith (655-6717 n2orchids@hotmail.com), Jeri Lee (jeri_lee1999@yahoo.com, underline after “jeri” 362-6885.) Tell me if you are willing to drive someone- or just ask them. It would be a pity if people did not go before they didn't want to drive alone or could not afford gas. Speak up!

MORE NEWSLETTER BELOW

**MARK YOUR CALENDAR FOR THE
NINTH ORCHID DIGEST SPEAKER'S DAY!!
"ONCIDIINAE"**

Huntington Library and Botanical Gardens, San Marino, California
Saturday, June 18, 2011 – 12:30 pm to 8:00 pm in Friends Hall

FEATURING

All Genera Flower Display – Orchid Sales– Expert Lectures – Dinner
Remember!! AOS judging at 10:00 AM Open at 11:00AM to bring your blooming
plants for the flower display
Prize for best species and best hybrid

Lecturers: Cordelia Head, Jim Rassmann, Steve Beckendorf, Howard Liebman
Dinner Speaker: Mark Chase

VENDORS: J & L Orchids; Cal Orchids; Andy's Orchids; Sunset Valley Orchids, Orchid Inn

Tickets: \$60 (\$70 at door) for afternoon Seminars, Wine and Cheese Happy Hour; Dinner and Evening Entertainment
Please Contact: Simone Friend, 4349 Dogwood Ave., Seal Beach, CA 90740
Phone: (562) 431-1247 E-mail: orchidsimonef@aol.com

Make Your Reservations Now!

BELOW ARE TWO PICTURES TAKEN BY SHELLY NORTH,
OUR DISPLAY GURU, FROM THE EASTER SHOW AT THE
CAL.

AFTER THAT, THERE IS INFORMATION ABOUT
PAPHIOPEDILUM, THE SUBJECT OF MAY'S TALK BY
KAREN MUIR. THERE ARE THREE MORE PAGES.







MORE BELOW...

TELL ME ABOUT PAPHIOPEDILUM...those slipper orchids..

In case you were wondering, the orchid on the cover of this newsletter is Paph. Norito Hasegawa, named for a member of our club. It is a primary parvisepalum hybrid between *P.armeniicum* and *P. malipoense*. “Parvisepalum” is a kind of orchid where the lip looks like a (pardon) toilet bowl. Some call them “toilet bowl” orchids! A primary hybrid is a cross made from two species, orchids as they appear in nature. The flower is large in size with an excellent shape and color. The flowers are long lasting and some think they have a pine scent. They are easy to grow and stay compact in habit. They prefer low to medium light and bloom in the spring and summer. Producing one to two flowers that are 3 to 4 inches in size on a 12-20 inch flower spike. The flowers are green to greenish-yellow. I know that Orchids Limited sells them (www.orchidweb.com).

GREAT ARTICLE ON PAPHIOPEDILUM

Since our talk this month is on slipper orchids, please click on the BEST article on paphs I have ever seen.

<http://www.ladyslipper.com/paphfaq.htm> written by Bob and Lynn Wellenstein of Antec Laboratory. It is a question and answer format that answers questions on every aspect of lady slipper culture. It is really brilliant. I would reprint it here but it is 32 pages long! Speaking of articles, I was very pleased to have my article on Darwin printed in this issue of ORCHID DIGEST.

See you May 1st. Love Carol